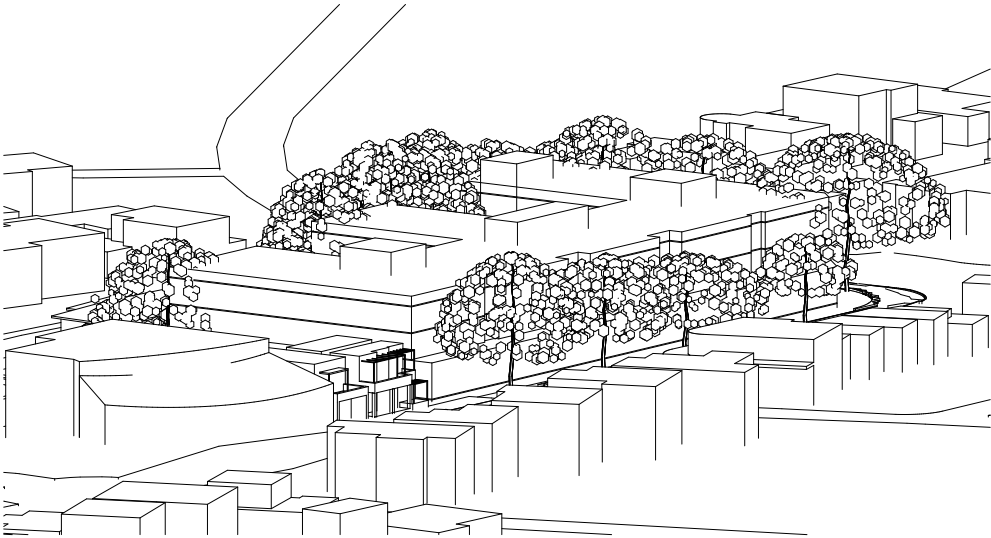
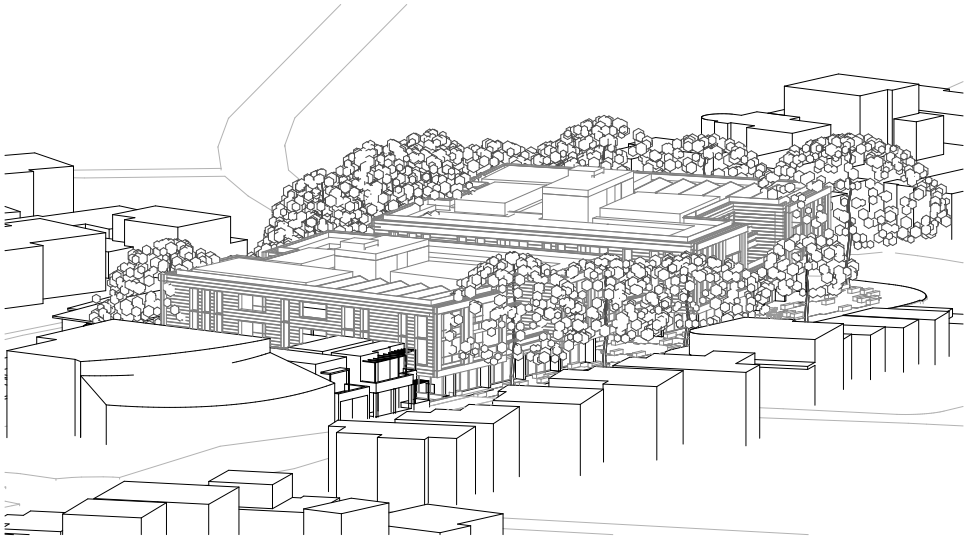


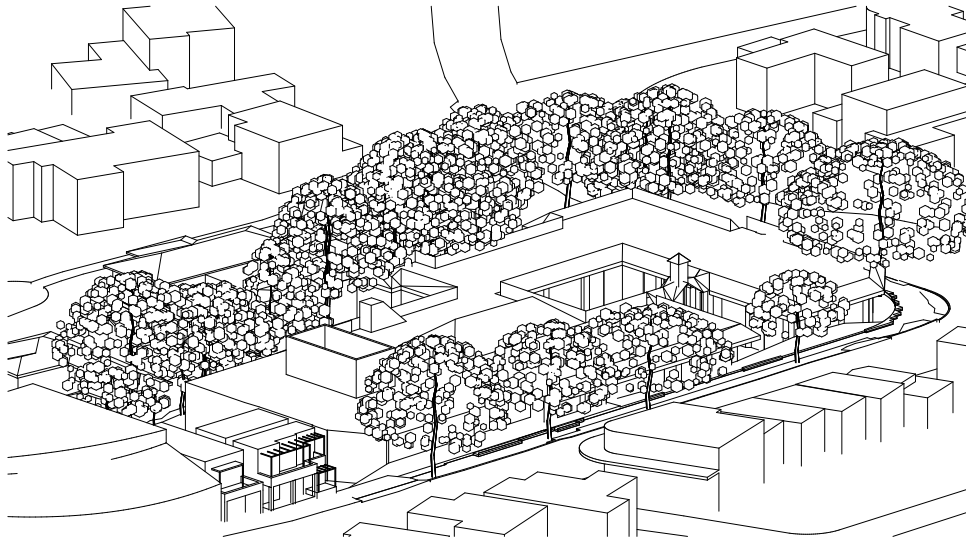
8am - Existing with Trees



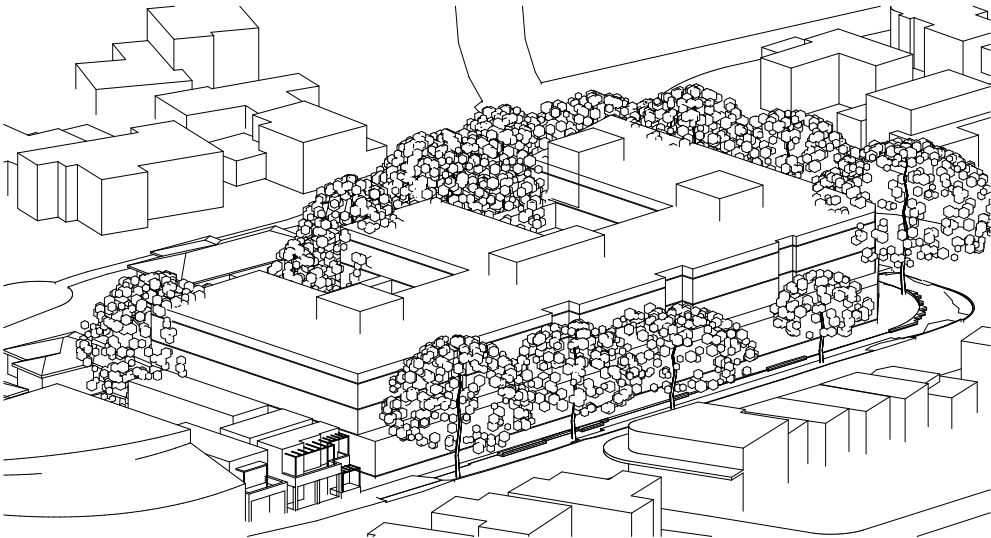
8am - WLCS2036 Potential Scheme With Trees



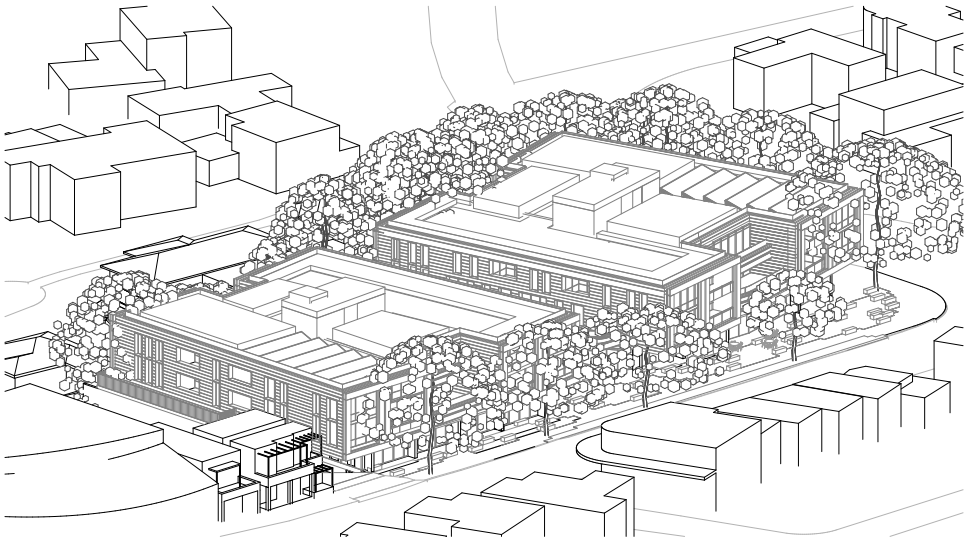
8am - Proposed with Trees



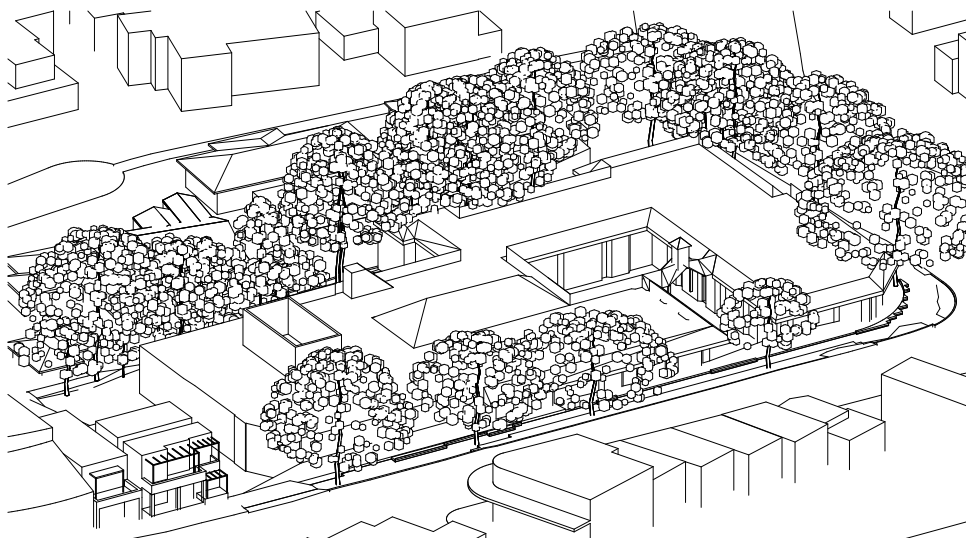
9am - Existing with Trees



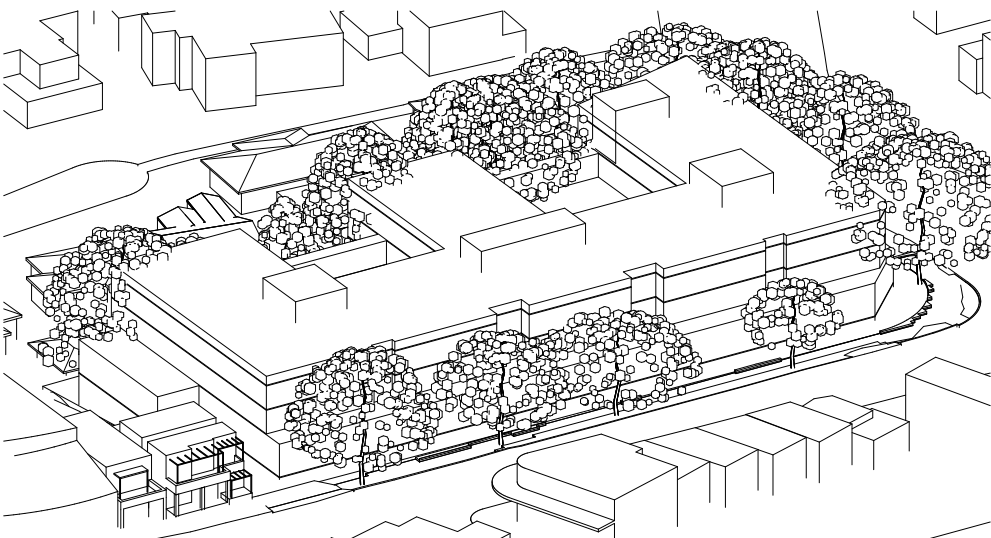
9am - WLCS2036 Potential Scheme With Trees



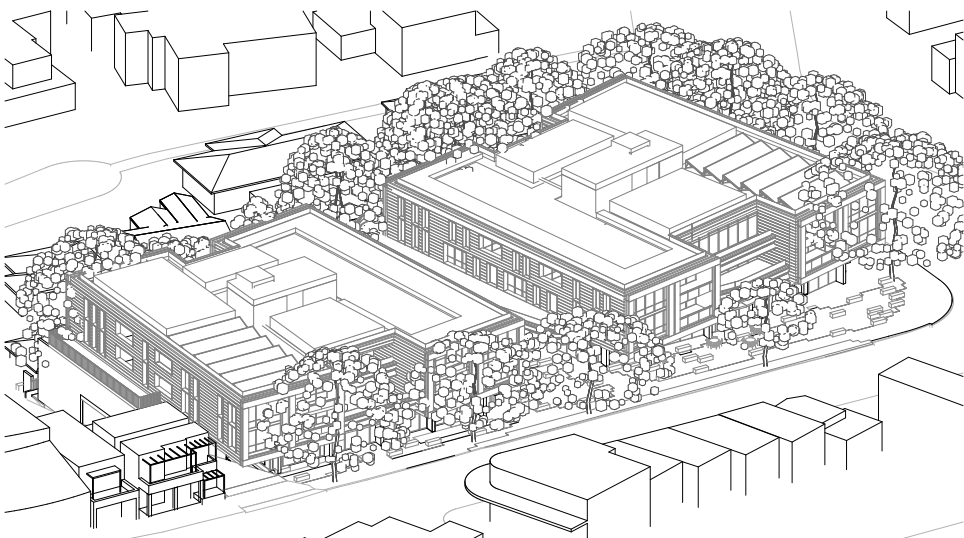
9am - Proposed with Trees



10am - Existing with Trees



10am - WLCS2036 Potential Scheme With Trees



10am - Proposed with Trees

Solar Analysis - June 21

Solar Analysis - June 21

Solar Analysis - June 21

Planning Proposal Submission

The Quadrangle - Castlecrag  
100 Edinburgh Road Castlecrag NSW 2068

Eye of the Sun with Trees - June 21 - Sheet 1  
Solar Analysis

NOTE: Drawings are for illustrative purposes only. The Design and layout are a reference scheme for planning proposal approvals only. Plans are subject to change at subsequent planning phases

Rev	Date	Description
02	27/8/21	Submission

By	Chk	Scale
DN	RFJ	1:400 @ A3

Code
GQC

Sheet
6210

Rev
02

0	4	10	20m





This aerial view shows the proposed building layout for the new school. The main building is a large, rectangular structure with a central courtyard. To the left of the main building is a smaller, rectangular structure, likely a gymnasium or cafeteria. The building is surrounded by a parking lot and a landscaped area with trees and shrubs. The site is bounded by a road to the north and a road to the south. The drawing is a line art illustration, showing the building's footprint, parking spaces, and landscaping elements.

An aerial perspective line drawing of a proposed building complex. The drawing shows the building's footprint, which includes several interconnected rectangular volumes. The building is surrounded by numerous trees, represented by clusters of small circles. To the left of the main building, there is a smaller, more complex structure that appears to be a parking garage or a service building. The drawing also shows the surrounding streets and other existing buildings in the area, providing context for the proposed development.

This aerial view illustrates the proposed development site, showing the layout of the new building, existing structures, and surrounding streets. The site is bounded by streets on three sides, with a parking area and landscaping (trees) integrated into the design. The new building is shown as a large, rectangular structure with a central courtyard area. Existing buildings are shown as smaller, irregular shapes. The surrounding streets are labeled with street names and numbers.

An aerial perspective architectural rendering of a proposed building complex. The main building consists of two interconnected rectangular volumes with flat roofs. The left volume is taller and features a series of vertical fins or columns along its side. The right volume is shorter and wider, with a prominent entrance area on its front facade. The building is surrounded by a dense planting of trees, represented by numerous small circles. To the left of the main building is a smaller, multi-story structure with a more complex roofline. The entire site is bordered by streets, with a curved sidewalk and a row of trees along the bottom edge. The rendering is a black and white line drawing.

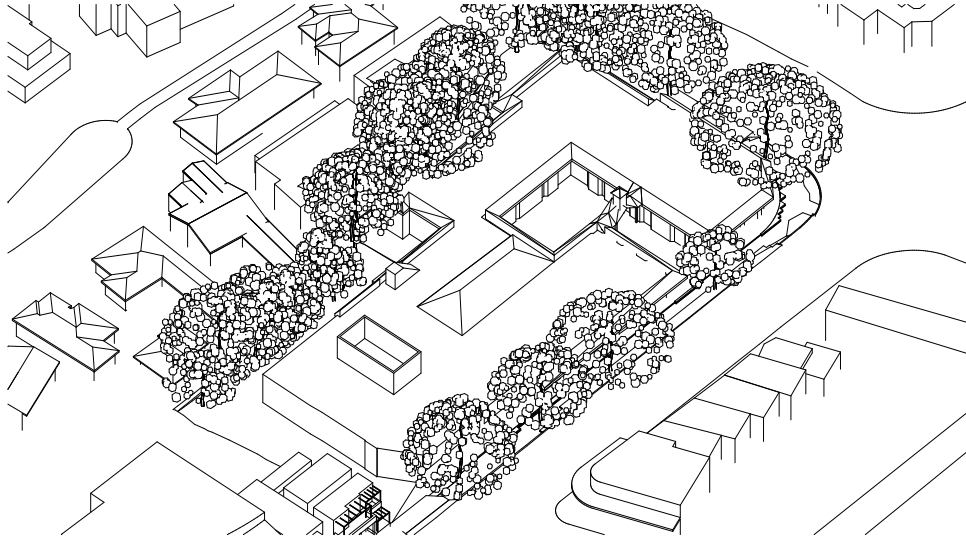
An aerial line drawing of a residential development. A central rectangular area contains a large, dense cluster of trees and a small, simple rectangular building. This central area is bordered by a road on the left and a road on the right. To the left of the central area, there is a row of several small, rectangular buildings. To the right, there are more buildings, some with gabled roofs. The drawing uses simple lines to represent buildings, roads, and trees, with the trees depicted as dense clusters of small circles.

This aerial view illustrates the proposed development's footprint and its integration with the surrounding urban context. The building is shown as a large, rectangular structure with a flat roof, surrounded by parking spaces and landscaped areas with trees. The surrounding context includes existing buildings, streets, and a network of pedestrian and bicycle paths.

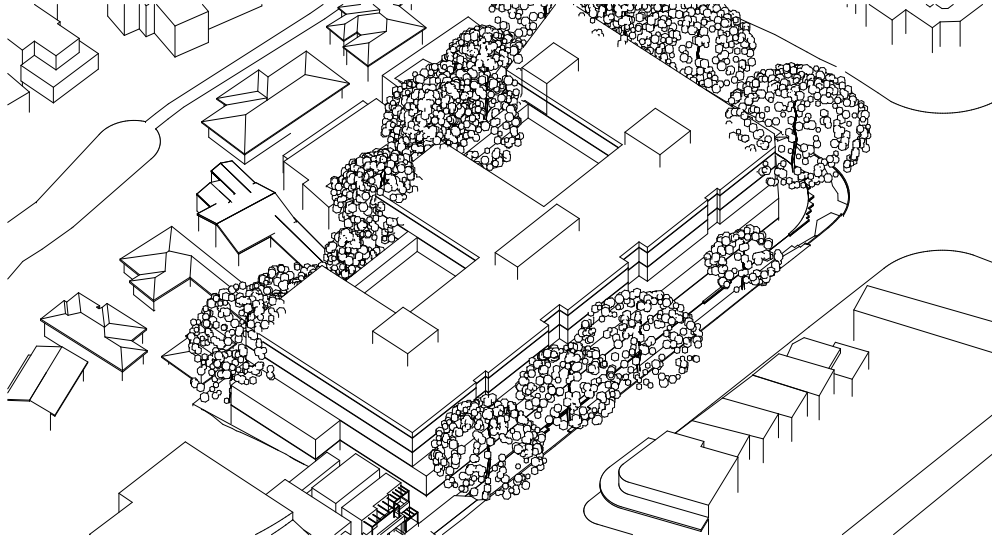
## Solar Analysis - March 21

fjmtstudio

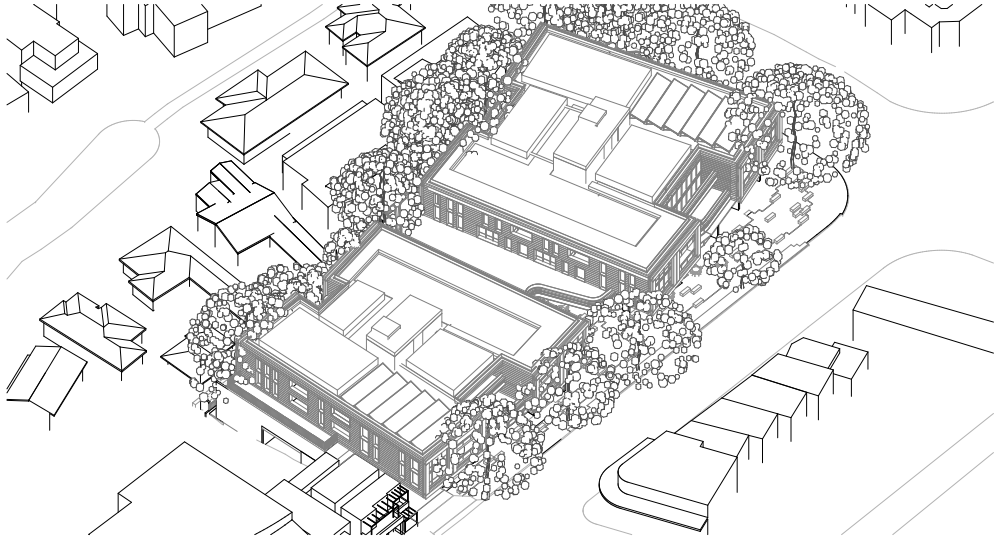




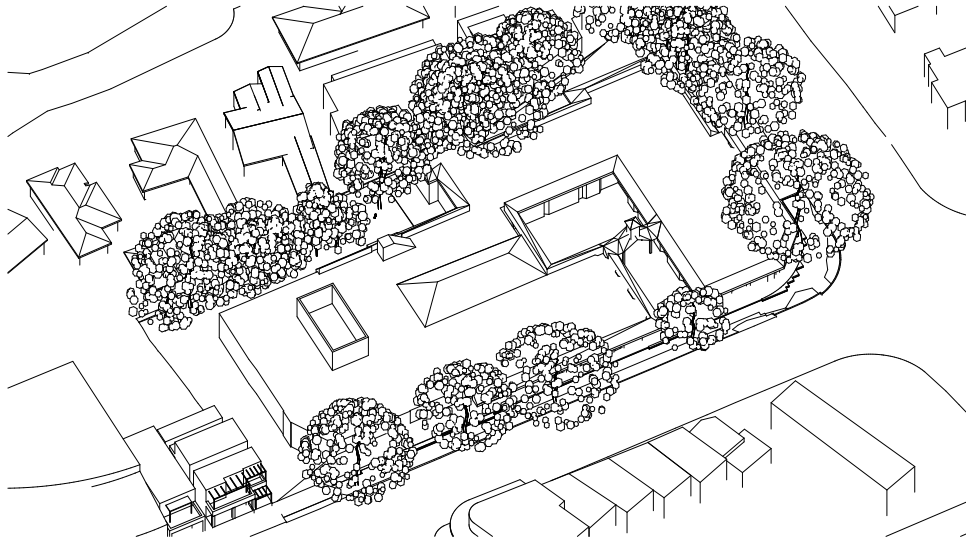
11am - Existing with Trees



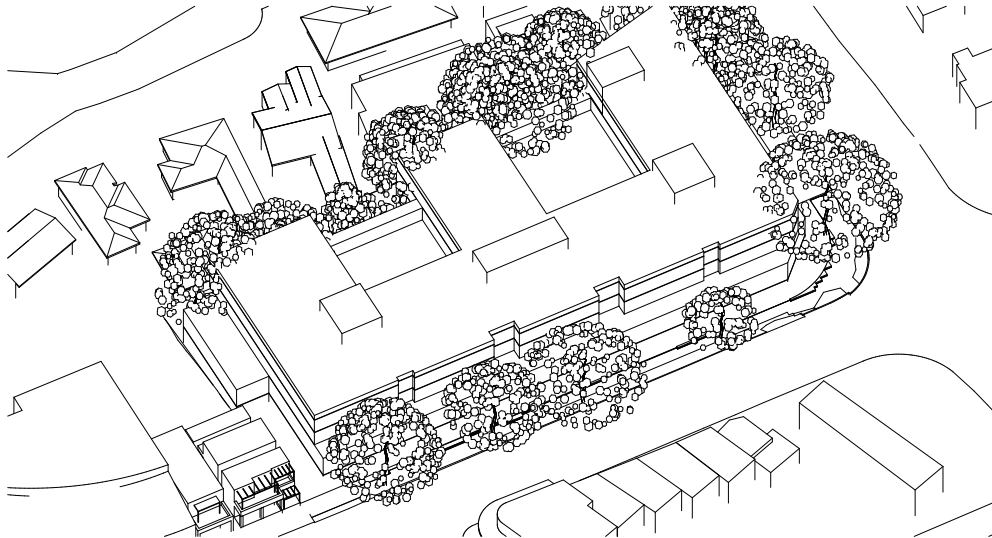
11am - WLCS2036 Potential Scheme with Trees



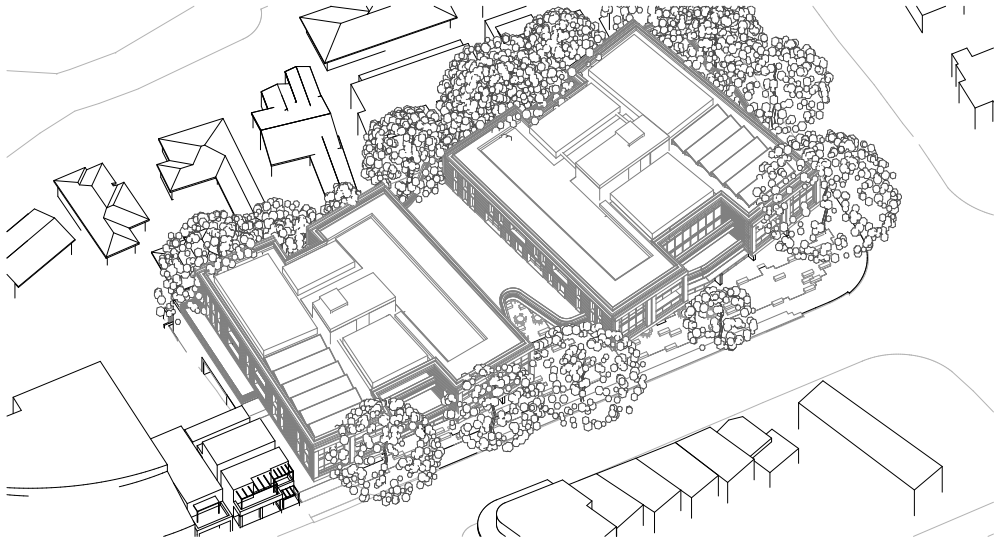
11am - Proposed with Trees



12am - Existing with Trees



12am - WLCS2036 Potential Scheme with Trees



12am - Proposed with Trees



1pm - Existing with Trees



1pm - WLCS2036 Potential Scheme with Trees



1pm - Proposed with Trees

Solar Analysis - March 21

Solar Analysis - March 21

Solar Analysis - March 21

Planning Proposal Submission

<div>The Quadrangle - Castlecrag</div> <div>100 Edinburgh Road Castlecrag NSW 2068</div>	<div>Eye of the Sun - March 21 With Trees - Sheet 2</div> <div>Solar Analysis</div> <div>NOTE: Drawings are for illustrative purposes only. The Design and</div>	<table><tr><th>Rev</th><th>Date</th><th>Description</th><th>By</th><th>Chk</th></tr><tr><td></td><td></td><td></td><td></td><td></td></tr></table>	Rev	Date	Description	By	Chk						<div>Scale</div> <div>1:400 @ A3</div>	<div>Code</div> <div>GQC</div>	<div>Sheet</div> <div>6217</div>	<div>Rev</div> <div>01</div>	<div><div><div>0</div><div>4</div><div>10</div><div>20m</div></div><div><div></div><div></div><div></div><div></div></div></div> <div><div></div></div>
Rev	Date	Description	By	Chk													

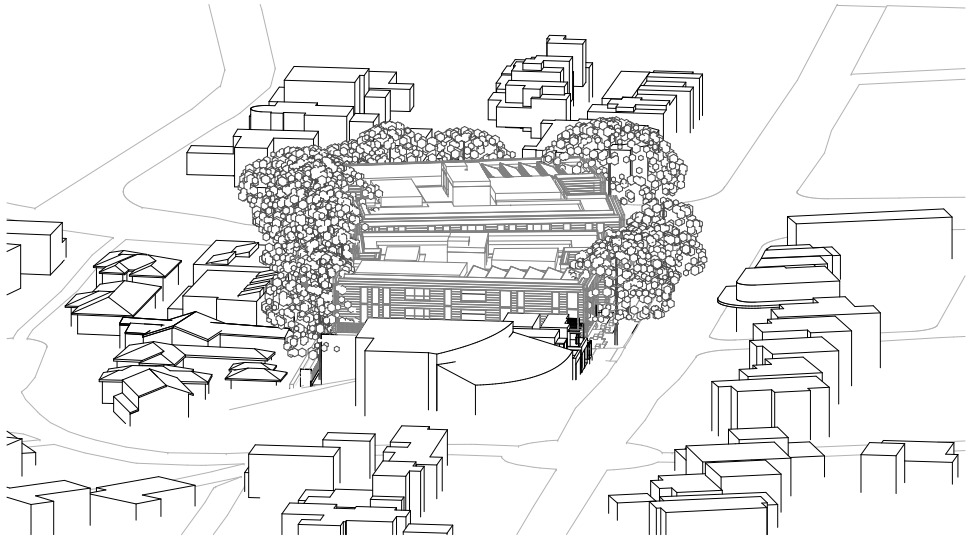




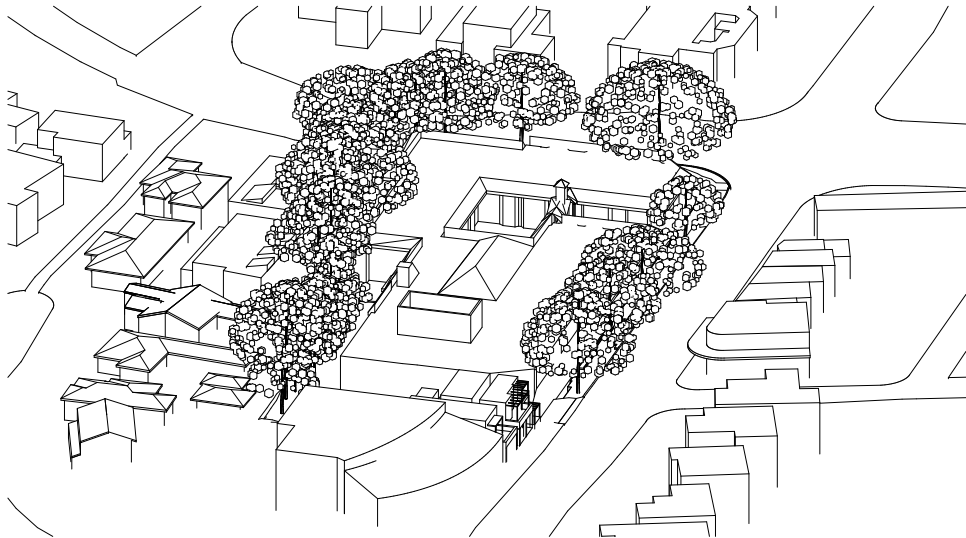
8am - Existing with Trees



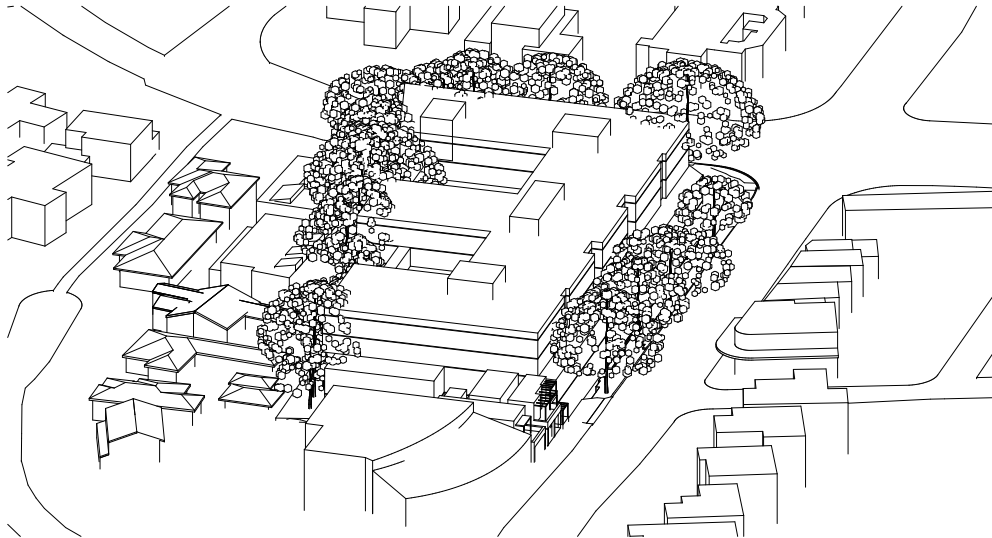
8am - WLCS2036 Potential Scheme with Trees



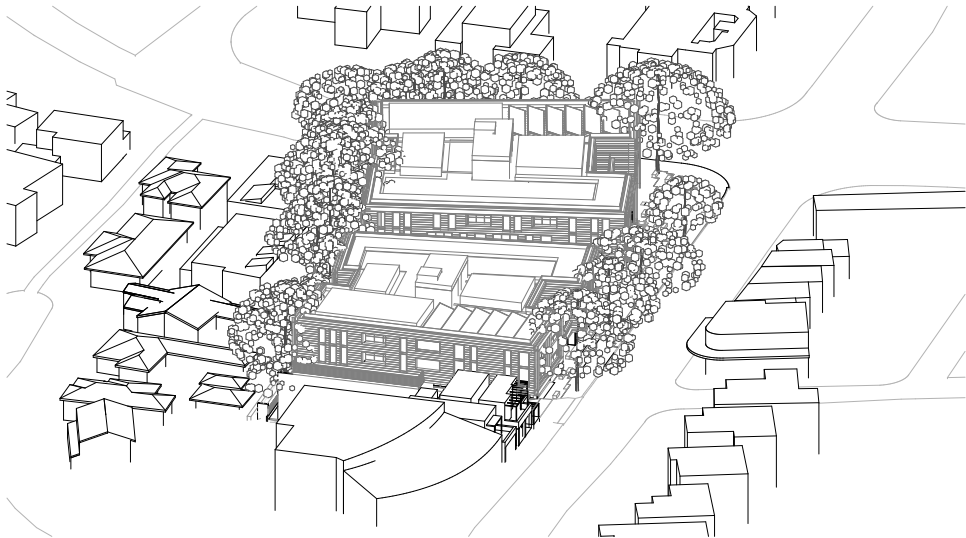
8am - Proposed with Trees



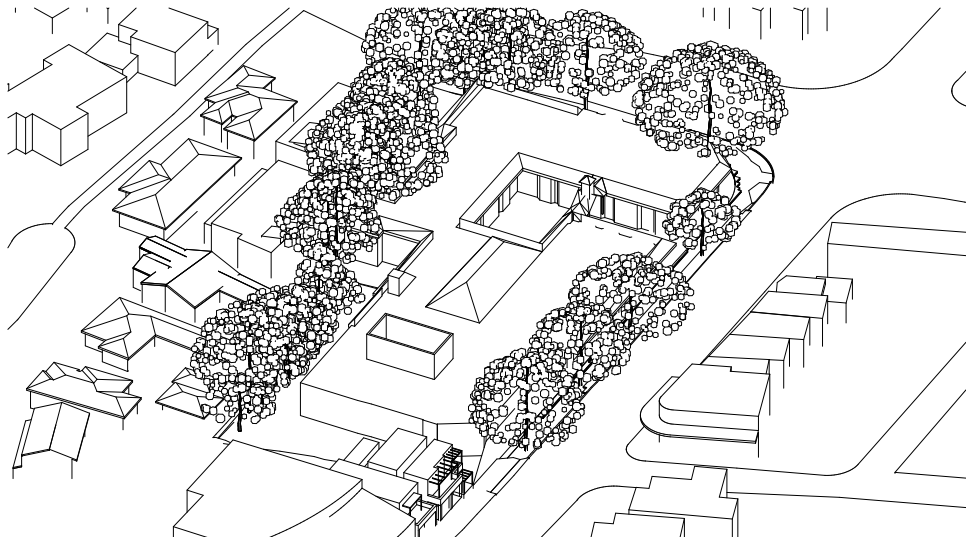
9am - Existing with Trees



9am - WLCS2036 Potential Scheme with Trees

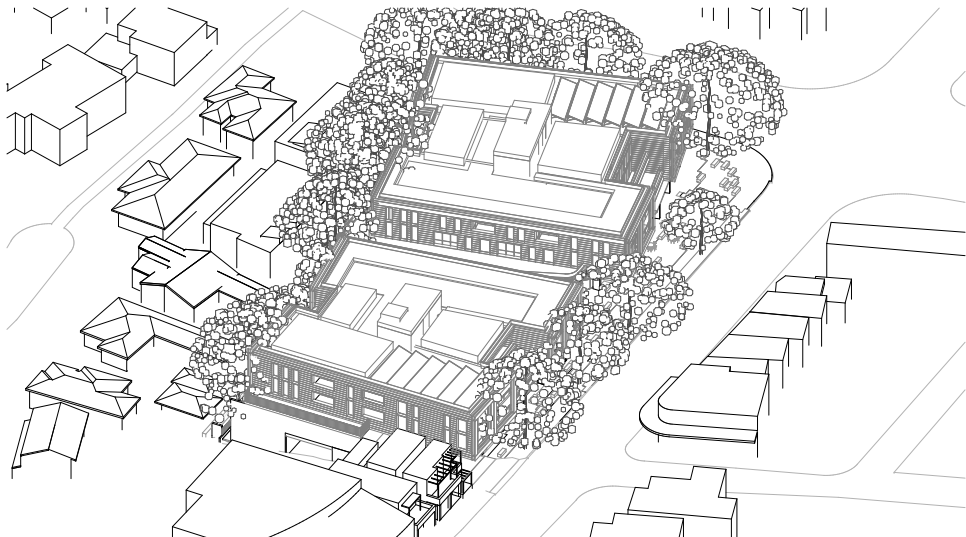


9am - Proposed with Trees



10am - Existing with Trees

10am -WLCS2036 Potential Scheme with Trees



10am - Proposed with Trees

Solar Analysis - March 21

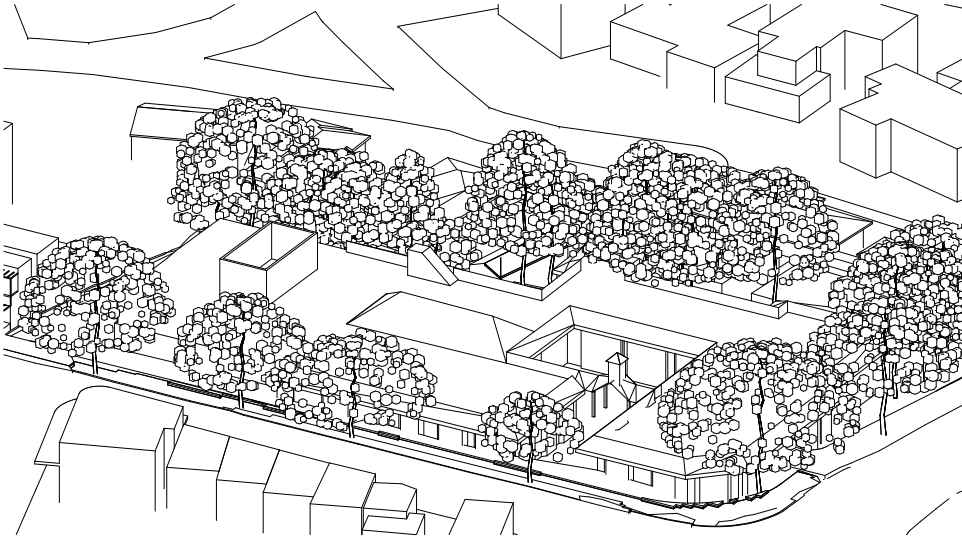
Solar Analysis - March 21

Solar Analysis - March 21

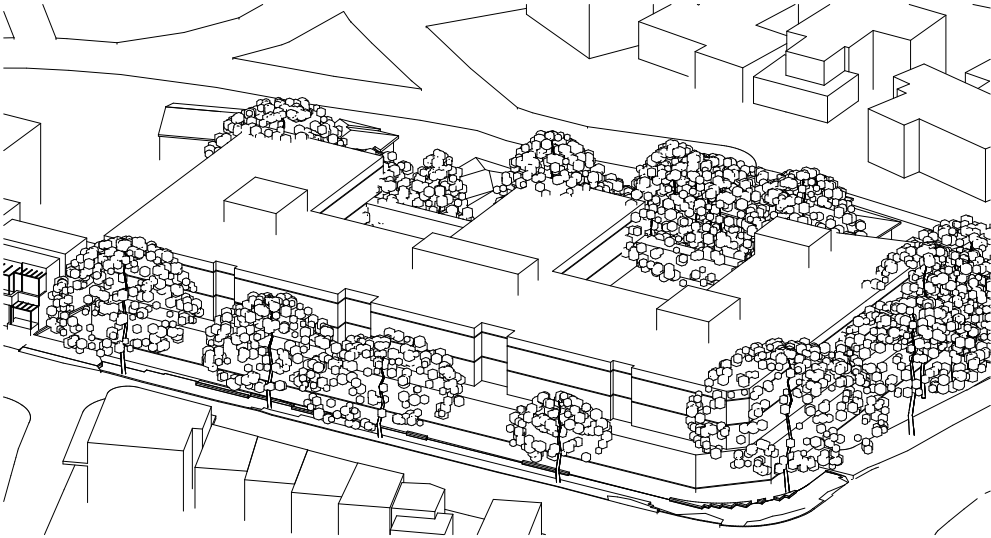
Planning Proposal Submission

<div>The Quadrangle - Castlecrag</div> <div>100 Edinburgh Road Castlecrag NSW 2068</div>	<div>Eye of the Sun - March 21 With Trees - Sheet 1</div> <div>Solar Analysis</div> <div>NOTE: Drawings are for illustrative purposes only. The Design and</div>	<div>Rev</div> <div>Date</div> <div>Description</div>	<div>By</div> <div>Chk</div>	<div>Scale</div> <div>1:400 @ A3</div>	<div>Code</div> <div>GQC</div>	<div>Sheet</div> <div>6216</div>	<div>Rev</div> <div>01</div>	<div>0</div> <div>4</div> <div>10</div> <div>20m</div> <div></div>	

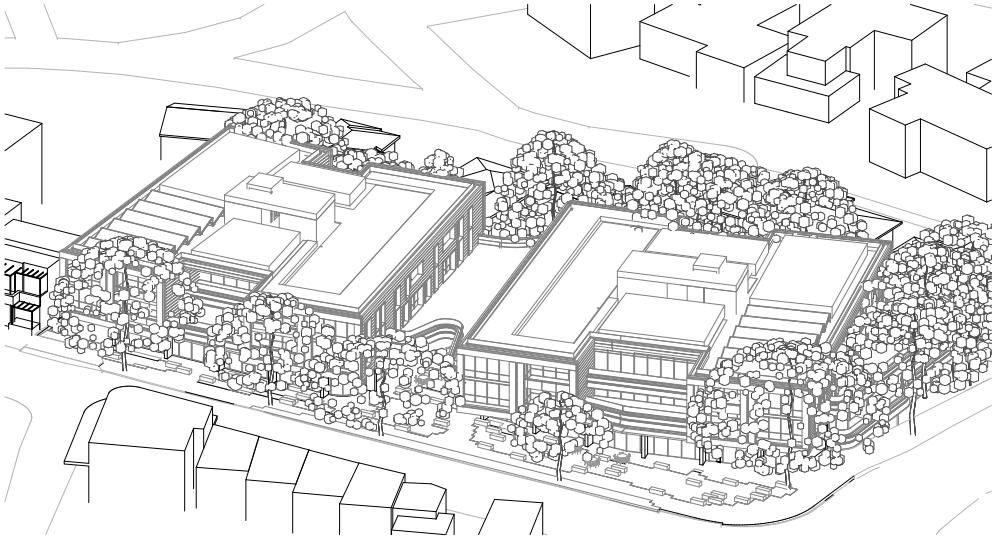




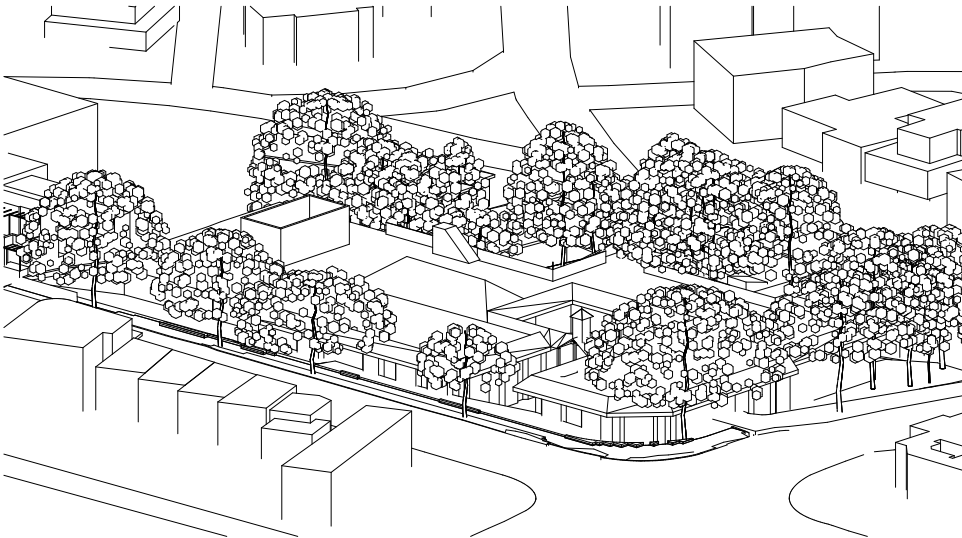
2pm - Existing with Trees



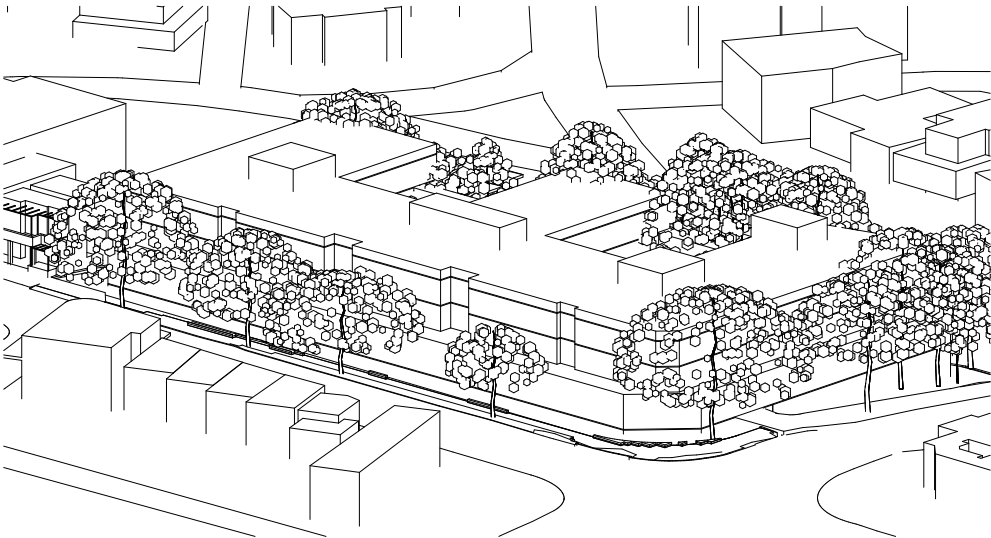
2pm - WLCS2036 Potential Scheme With Trees



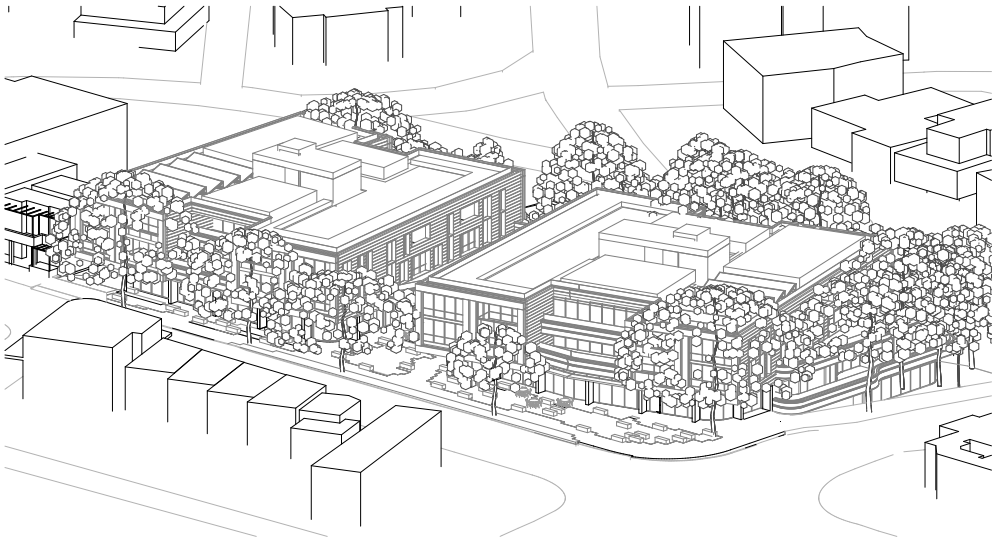
2pm - Proposed with Trees



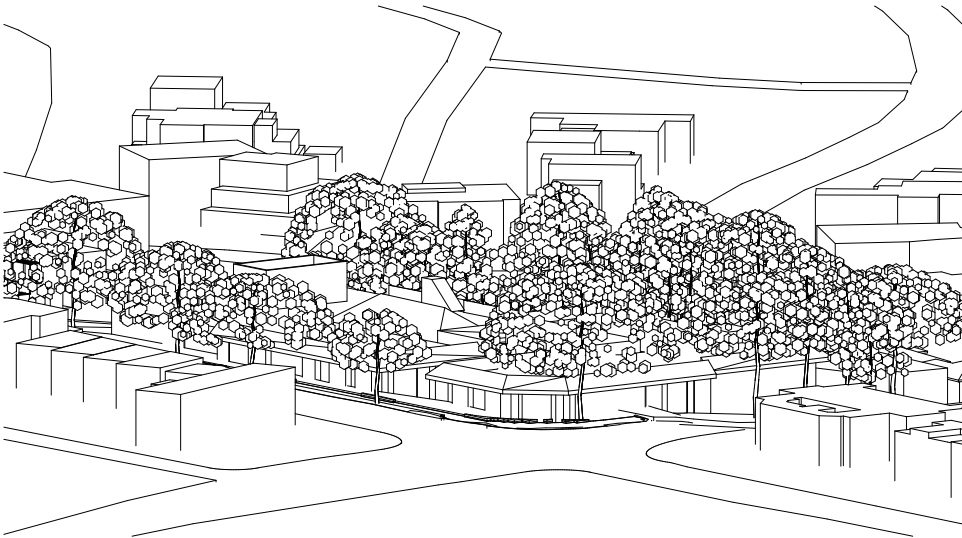
3pm - Existing with Trees



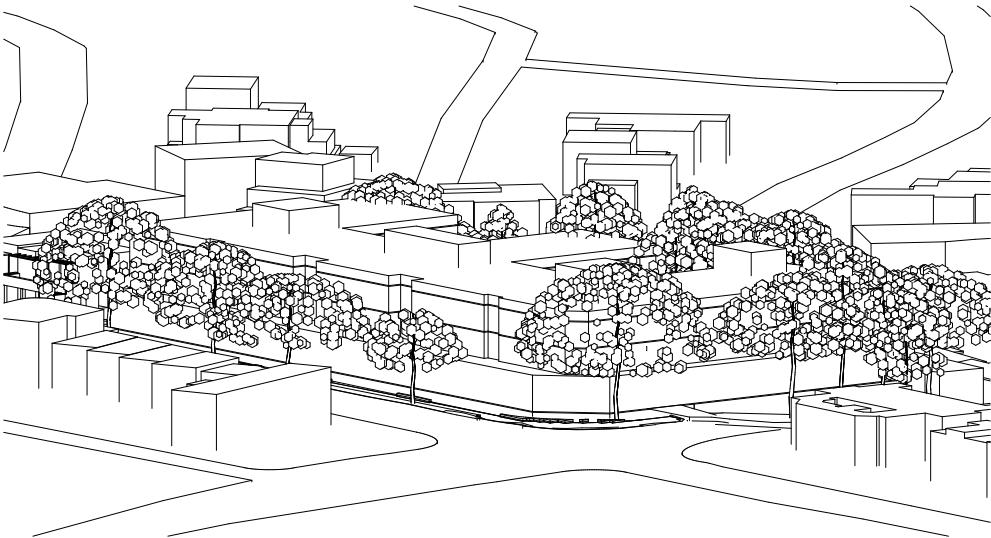
3pm - WLCS2036 Potential Scheme With Trees



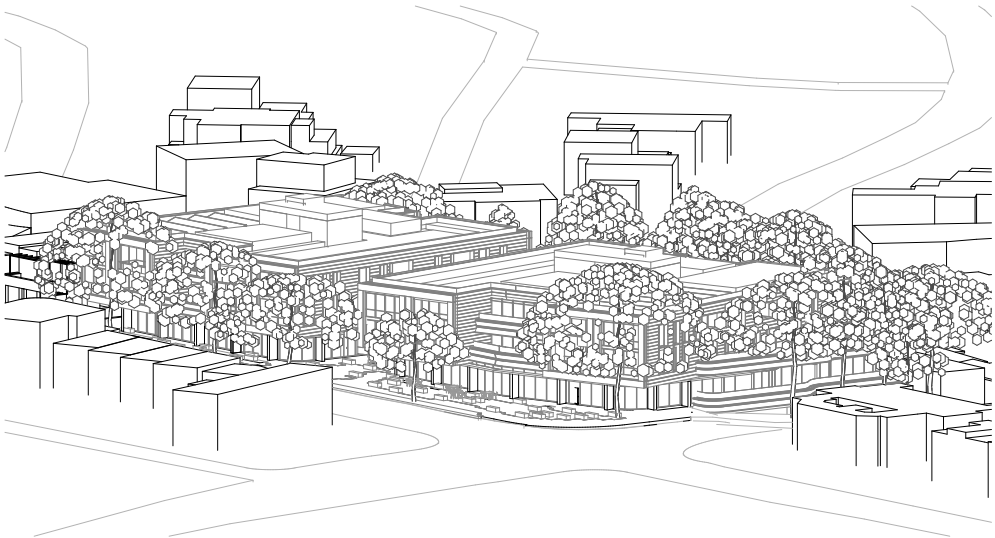
3pm - Proposed with Trees



4pm - Existing with Trees



4pm - WLCS2036 Potential Scheme With Trees



4pm - Proposed with Trees

Solar Analysis - June 21

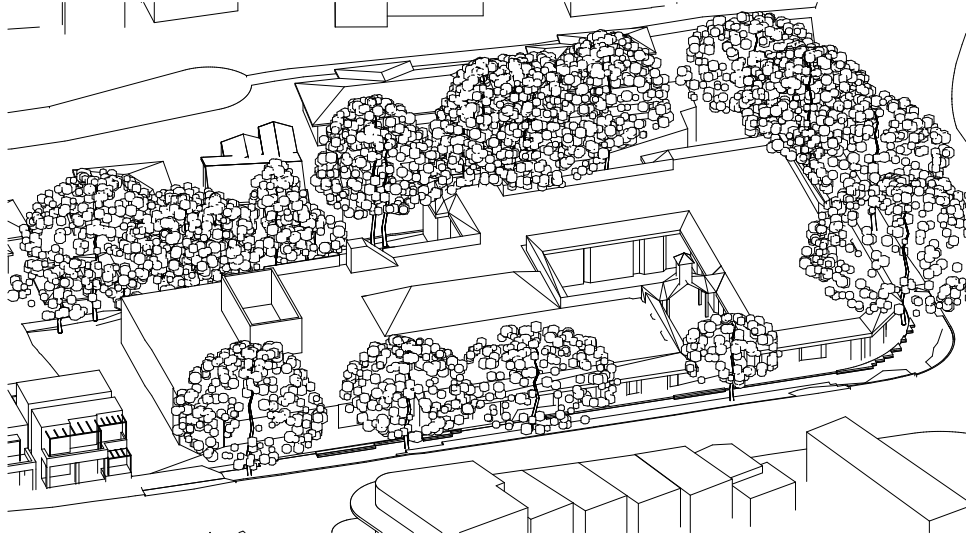
Solar Analysis - June 21

Solar Analysis - June 21

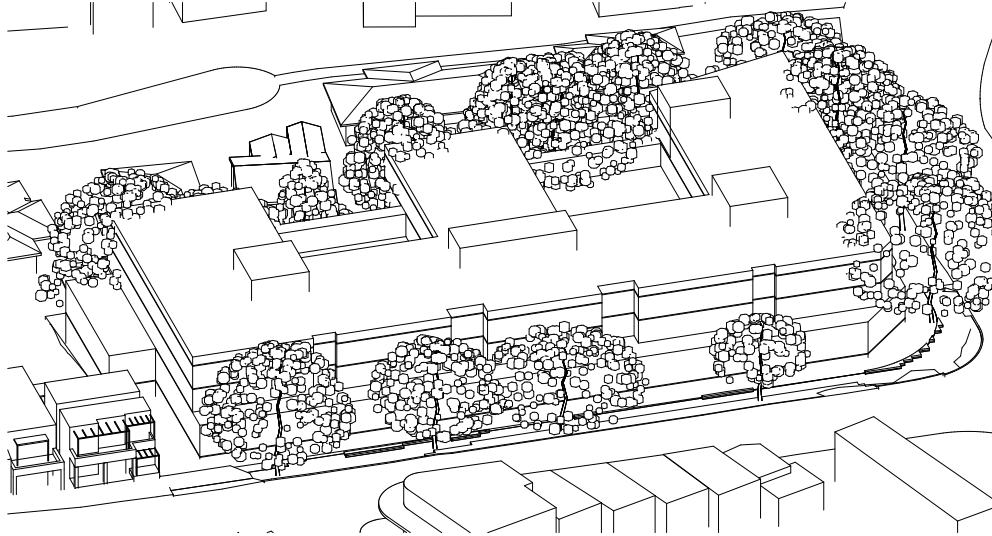
Planning Proposal Submission

The Quadrangle - Castlecrag 100 Edinburgh Road Castlecrag NSW 2068	Eye of the Sun with Trees - June 21 -Sheet 3 Solar Analysis NOTE: Drawings are for illustrative purposes only. The Design and layout are a reference scheme for planning proposal approvals only. Plans are subject to change at subsequent planning phases	Rev	Date	Description	By	Chk	Scale	Code	Sheet	Rev	0 4 10 20m			
		02	27/8/21	Submission	DN	RFJ	1:400 @ A3	GQC	6212	02				

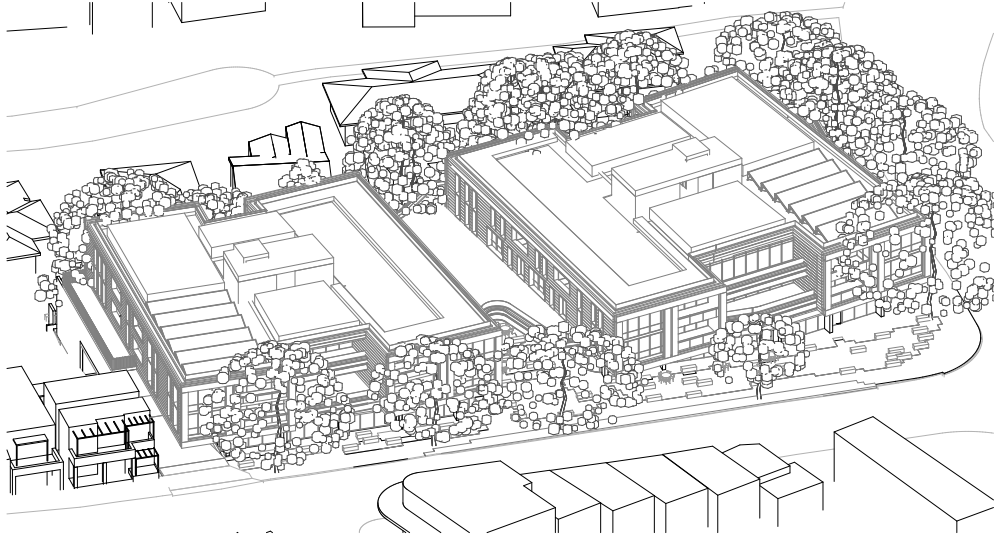




11am - Existing with Trees



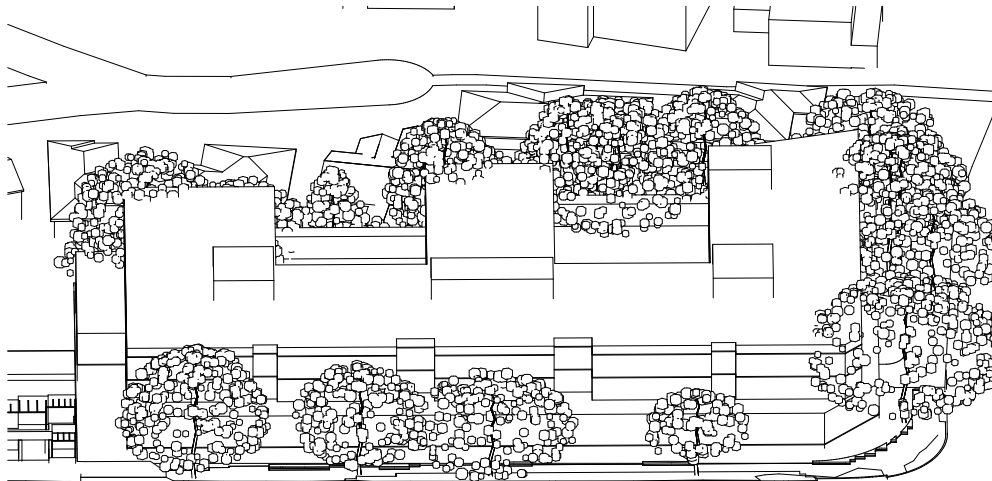
11am - WLCS2036 Potential Scheme With Trees



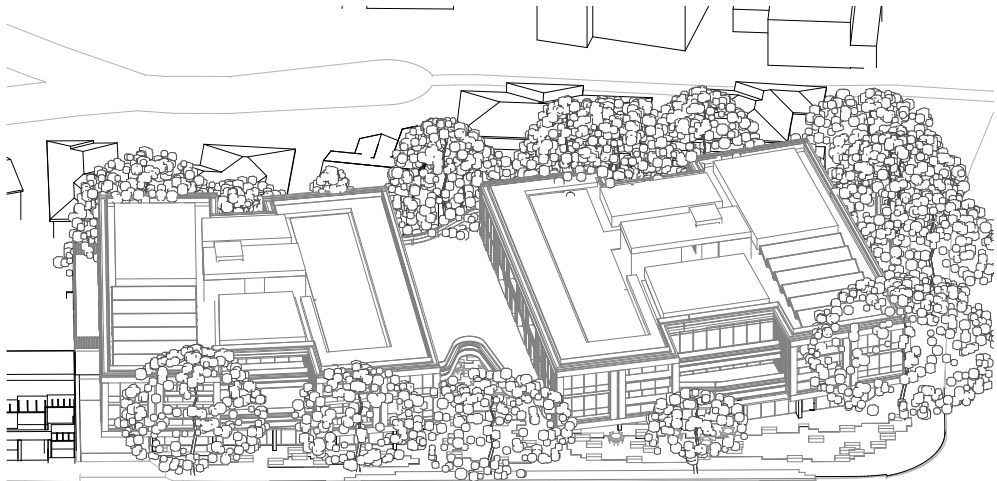
11am - Proposed with Trees



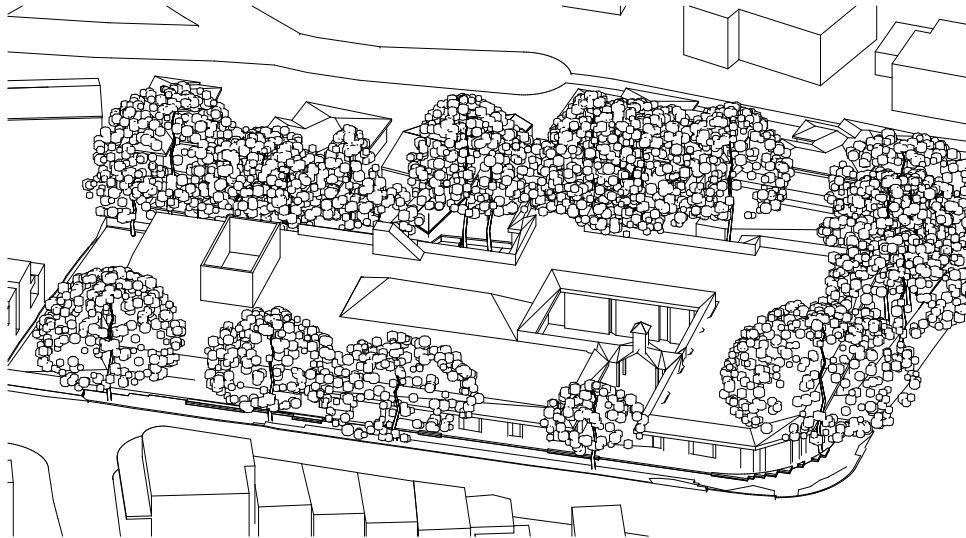
12am - Existing with Trees



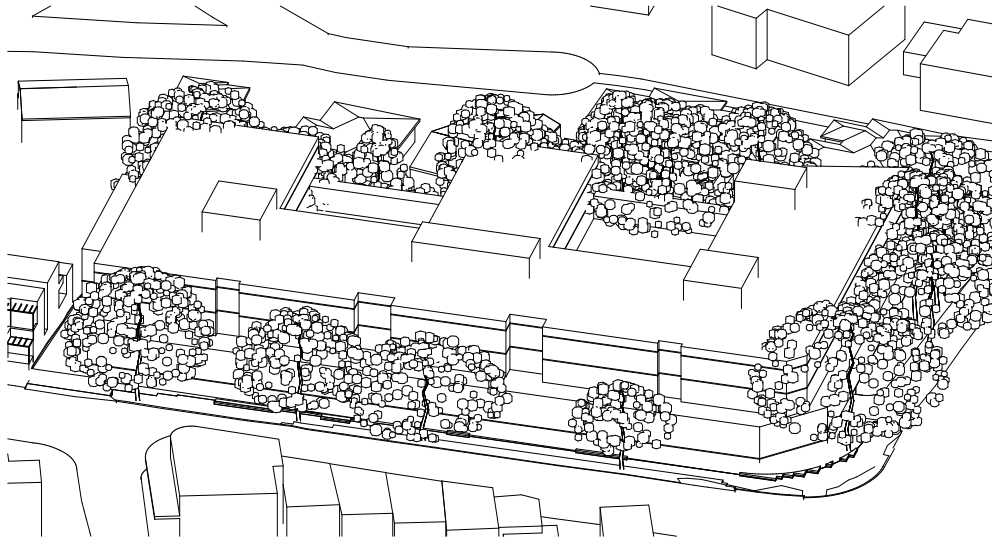
12am - WLCS2036 Potential Scheme With Trees



12am - Proposed with Trees



1pm - Existing with Trees



1pm - WLCS2036 Potential Scheme With Trees



1pm - Proposed with Trees

Solar Analysis - June 21

Solar Analysis - June 21

Solar Analysis - June 21

Planning Proposal Submission

The Quadrangle - Castlecrag 100 Edinburgh Road Castlecrag NSW 2068	Eye of the Sun with Trees - June 21 - Sheet 2 Solar Analysis NOTE: Drawings are for illustrative purposes only. The Design and layout are a reference scheme for planning proposal approvals only. Plans are subject to change at subsequent planning phases	Rev	Date	Description	By	Chk	Scale	Code	Sheet	Rev	041020m			
		02	27/8/21	Submission	DN	RFJ	1:400 @ A3	GQC	6211	02				